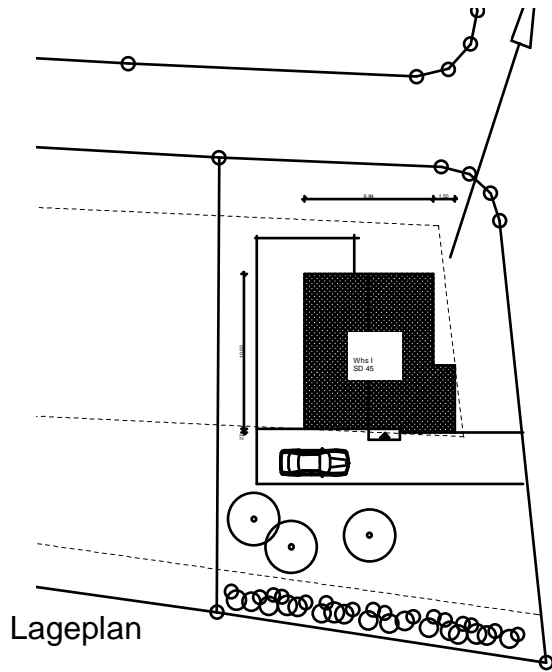
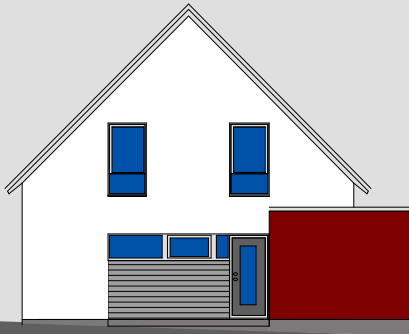


Projekt PB

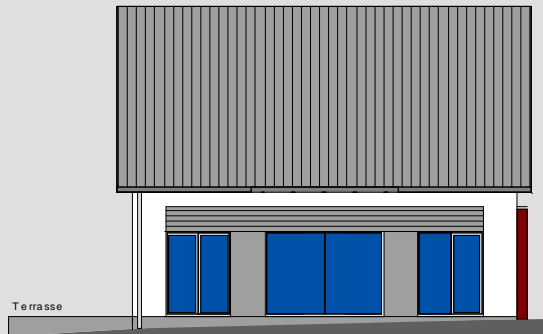


Lageplan

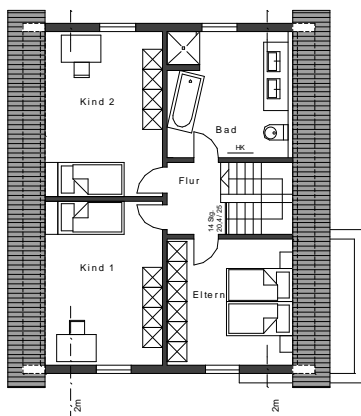
Erdgeschoss 81,54 m²
Obergeschoss 61,55 m²
Gesamt 143,09 m²



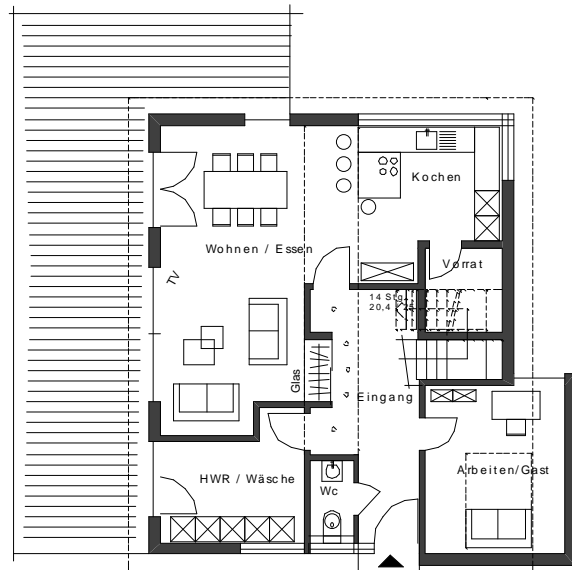
Süden



Westen



Obergeschoss



Erdgeschoss



WOHNHÄUSER · AN- UND UMBAUTEN · GEWERBEBAUTEN
ZIMMEREI · INNENAUSBAU · BEDACHUNGEN